



cardio



fitness



weight-lifting



functional training



yoga, pilates & rehabilitation



aerobic

» fitness

Sonerg - pardoseli pentru sali de fitness si intretinere corporala

Sonerg Brosura Sportec Fitness



Dale



Role



Puzzle





SPORTEC® color

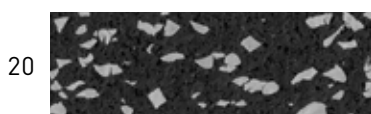
Role din cauciuc reciclat si granule EPDM 1,5 m latime, grosimi 4 - 10 mm



Gama culori granule EPDM



Procent granule EPDM



Sportec Color 0 =
0 % EPDM si 100% cauciuc reciclat

Best selling:

Sportec Color 15 =
15% EPDM si 85% cauciuc reciclat

Recomandat pentru:



»MORE FROM YOUR FLOOR



Material granule fine din cauciuc reciclat de culoare neagra, in combinatie cu un procent de 5, 10, 15, 20, 30 or 50 % granule colorate din EPDM

Latime rola 1,500 mm (± 1.5%)

Thickness
color 0:
4, 6, 8, 10 mm* (± 0.3 mm)
color 5, 10, 20, 50:
6 mm* (± 0.3 mm)
color 15: 4, 6, 8, 10 mm (± 0.3 mm)[*alte grosimi la cerere cu un minim de cantitate]

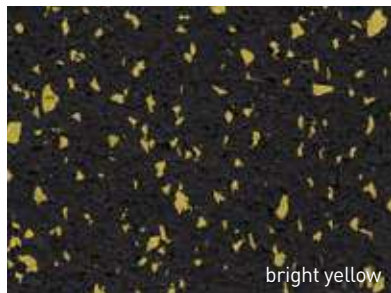
Lungime rola Lungime (m) / Grosime (mm):
30/4, 20/6, 15/8, 12/10 (± 1.5%)

Design cu dimensiune mica a granulelor de EPDM

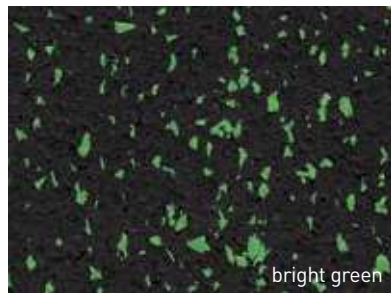


SPORTEC® splash

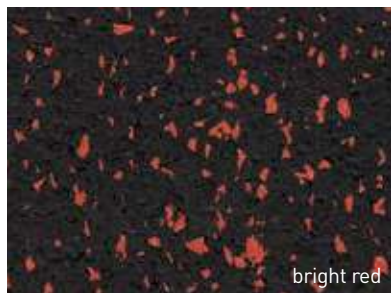
Top quality product - multiple posibilitati de design



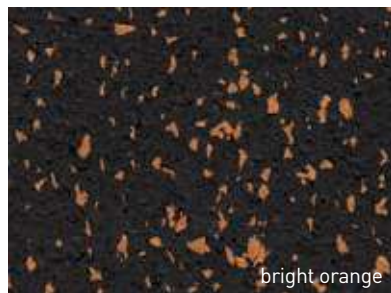
bright yellow



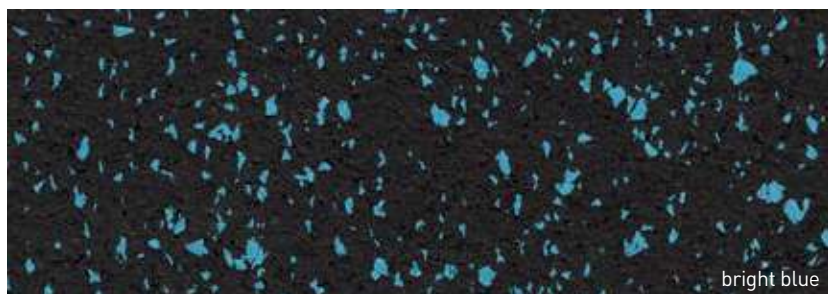
bright green



bright red



bright orange



bright blue

Recomandat pentru:



»MORE FROM YOUR FLOOR



Material	Granule fine din cauciuc reciclat (negru) cu granule EPDM colorate, cu granulatie mica / medie
Latime rola	1,500 mm (± 1.5%)
Grosime	4, 6, 8, 10 mm (± 0.3 mm) (alte grosimi la cerere)
Lungimea rolelor	Lungime (m) / Grosime (mm): 30/4, 20/6, 15/8, 12/10

Design dat de combinatia intre dimensiunile diferite ale granulelor de cauciuc sintetic EPDM (granule colorate EPDM mici si medii) cu densitate mare in suprafata materialului.





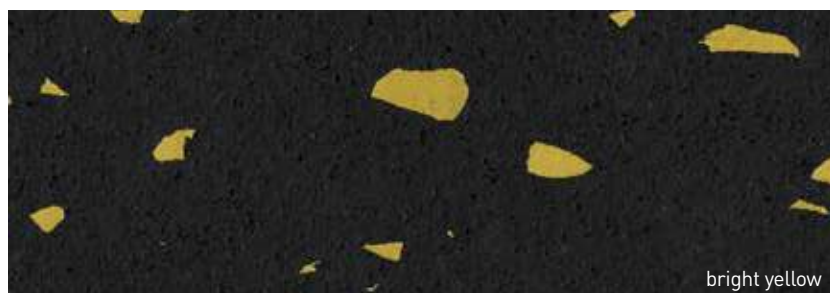




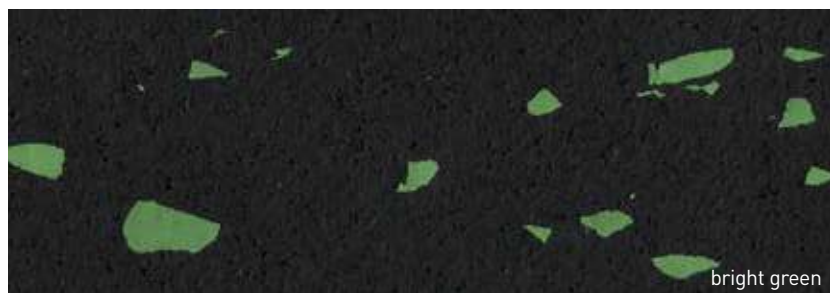


SPORTEC® giga

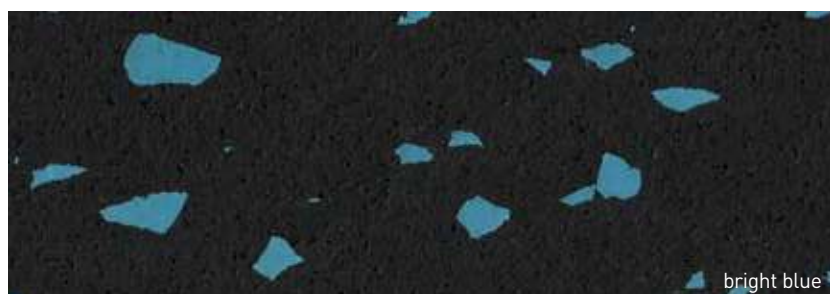
CONFORTABIL - SIGUR - DESIGN EXTRA ATRACTIV



bright yellow



bright green



bright blue

Propuse pentru:



»MORE FROM YOUR FLOOR



Material Granule fine din cauciuc reciclat (negru) cu granule EPDM colorate, cu granulatie mare

Latime role 1,500 mm (± 1.5%)

Grosime: 6, 8, 10 mm (± 0.3 mm)
(alte grosimi la cerere)

Lungimi role Lungime (m) / Grosime (mm):
20/6, 15/8, 12/10

Granule EPDM cu dimensiuni mari, cu densitate mai mica pe suprafata materialului.



SPORTEC® fusion classic

Role prefabricate grosime 8 mm din 1 strat 4 mm cauciuc reciclat si 4 mm Sportect UNI, EPDM



red

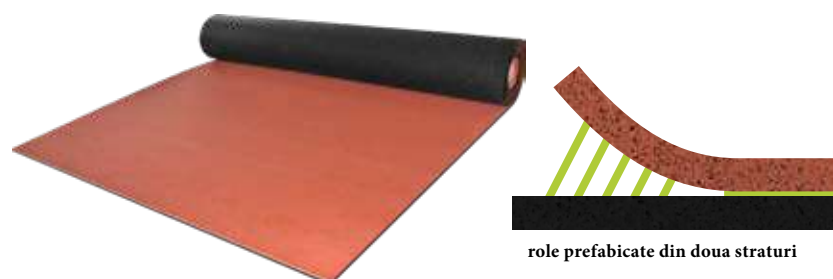


blue

Recomandat pentru:



» MORE FROM YOUR FLOOR



role prefabricate din doua straturi

Material

Strat de uzura: granule fine din EPDM culoare uni rosu caramiziu | albastru
Strat suport: granule fine cauciuc reciclat

Latime role: 1,250 mm (± 1.5%)

Grosime: 4 mm + 4 mm = 8 mm (± 0.6 mm)

Lungime role: 15 m

Solutie ideala pentru realizarea unor piste de alergare indoor sau out-door



SPORTEC® purcolor

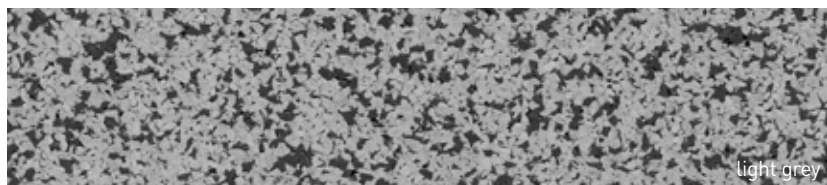
Role din cauciuc 100% EPDM



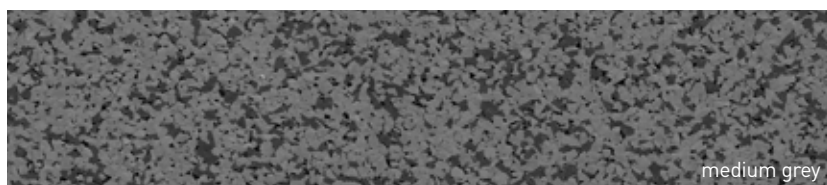
red



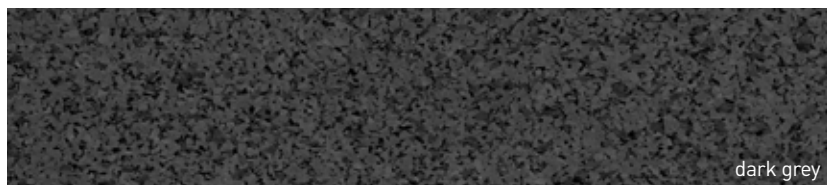
blue



light grey



medium grey



dark grey

Recomandari pentru:



»MORE FROM YOUR FLOOR



Material 100 % grenule EPDM

Latimea rolor 1,25 m (± 1.5%)

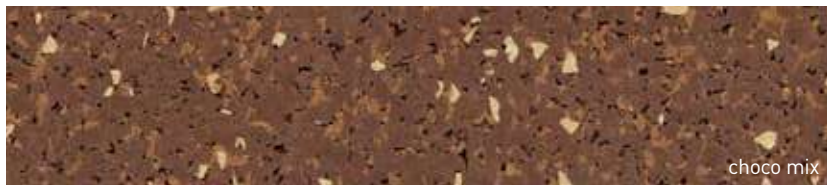
Grosimea 4, 6, 8 mm (± 0.3 mm)
(alte grosimi la cerere)

Lungimea rolor Lungime (m) / Grosime (mm):
30/4, 20/6, 15/8



SPORTEC® variant

Soluție ce permite alegerea culorilor - custom design



Applications



» MORE FROM YOUR FLOOR



Material Granule EPDM multicolor

Latime rola 1,250 mm (± 1.5%)

Grosimi: 4 or 6 mm (± 0.3 mm)
(alte grosimi la cerere)

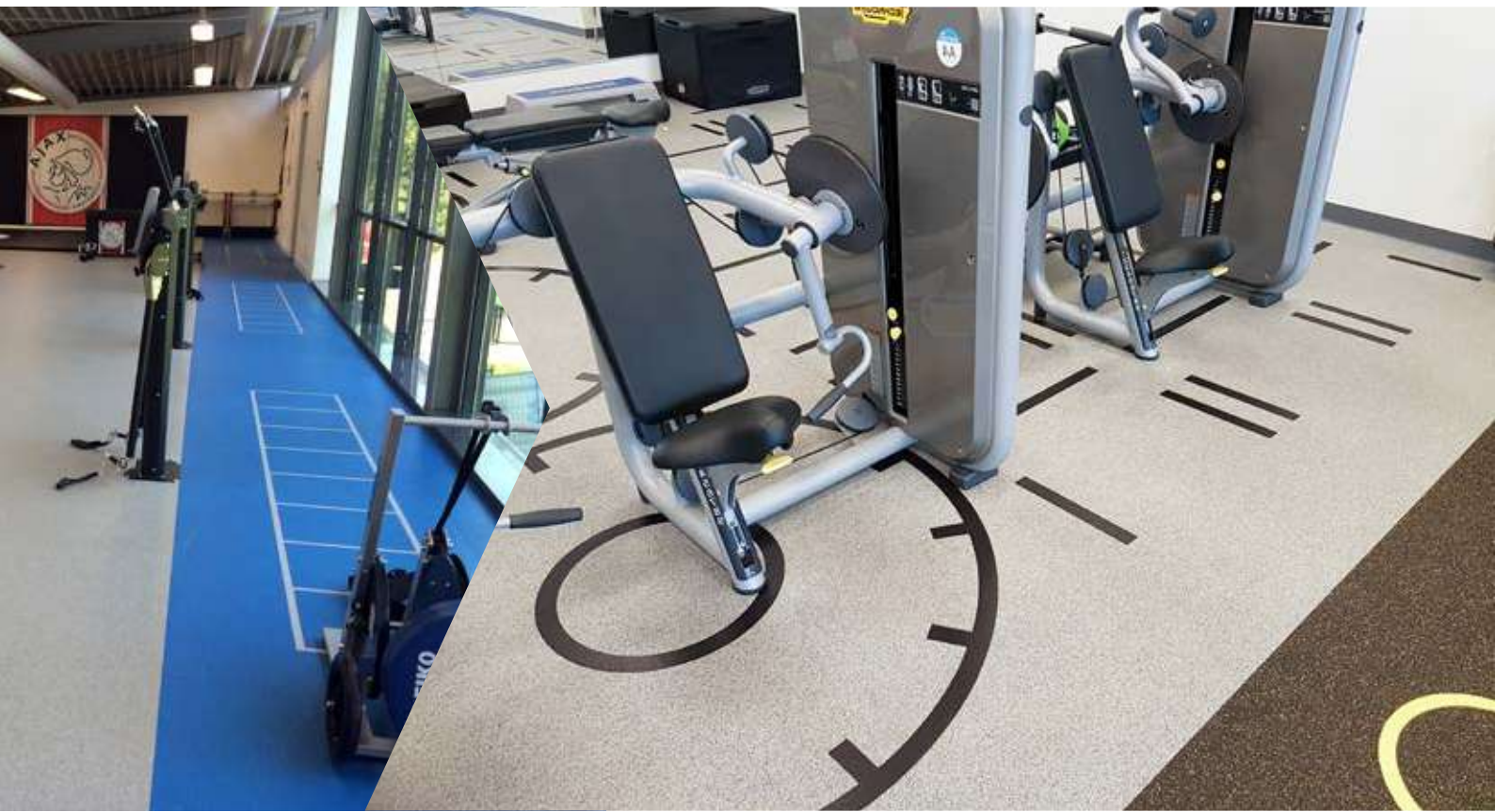
Lungime rola Length m (± 1.5%)/Thickness mm:
30/4, 20/6



SPORTEC® Color Mixer

Serviciu pentru alegerea culorilor - custom colors!

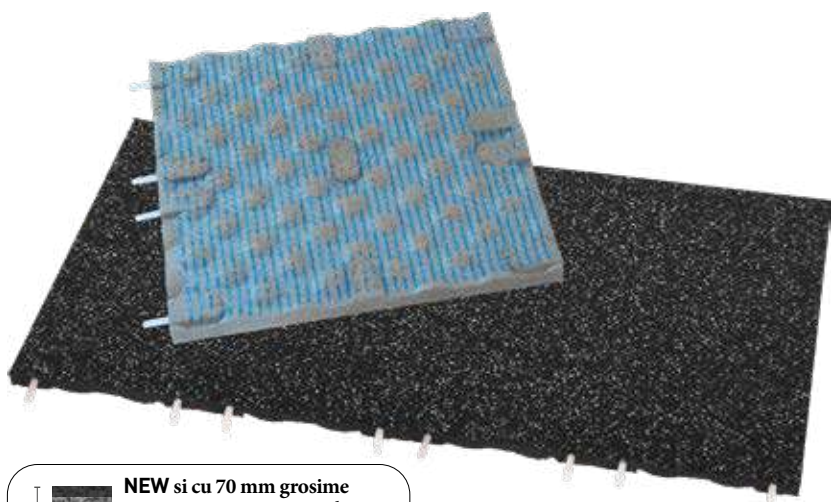






SPORTEC® style

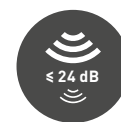
Dale din cauciuc 500x500 mm sau 1000x500 mm pentru zone cu haltere | gantere > 25 kg



Recomandate pentru:



» MORE FROM YOUR FLOOR



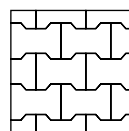
NEW si cu 70 mm grosime pentru amortizarea socurilor si a vibratiilor la caderea greutatilor pe pardoseala



SPORTEC® UNI versa
(inclusiv cu utilizare out-door)

SPORTEC® purcolor

SPORTEC® color 15
[Disponibil si cu strat uzura Sportec Color 0]



Disponibile si in design pavele H (doar pentru 500 x 500 x 30 mm)

Material Cauciuc reciclat cu strat de uzura Sportec (vezi culorile atasate)

Colours SPORTEC® color 15 / Purcolor / UNI versa (doar pentru grosimea de 30 mm)

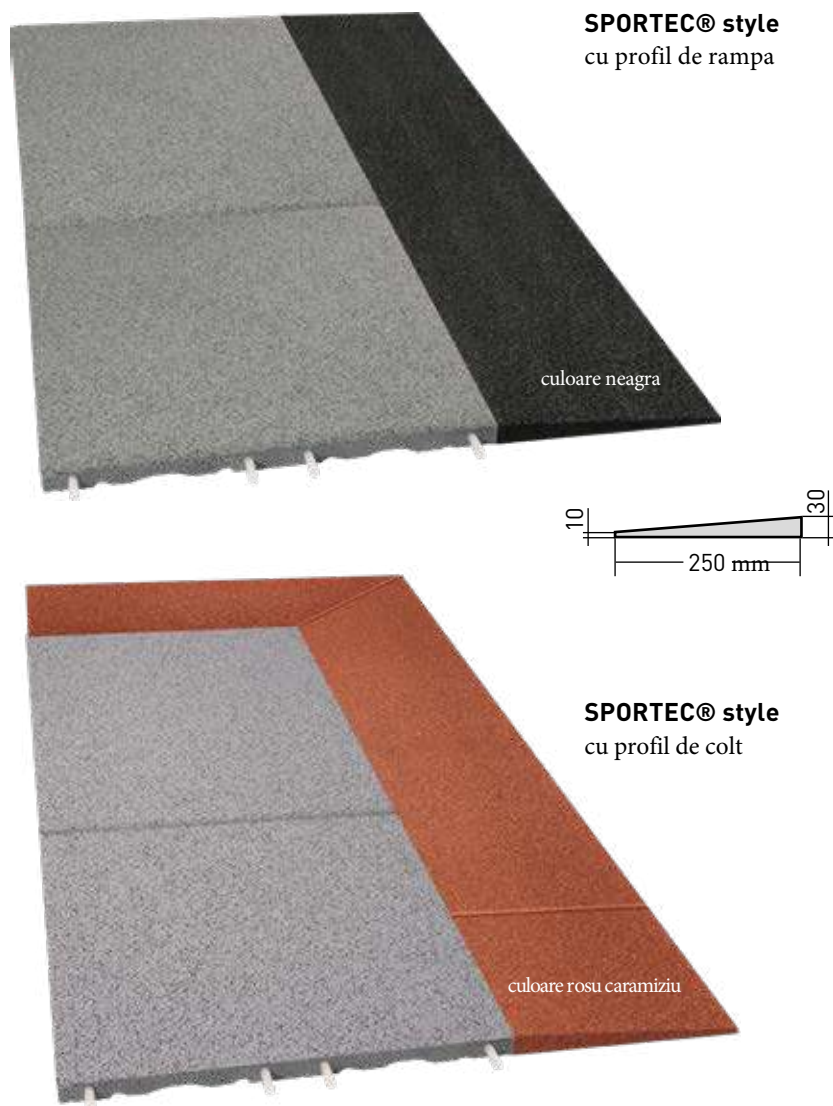
Thickness 30, 70 mm (± 2 mm)

Dimensions **30 mm:** 500 x 500 / 1,000 x 500 mm
70 mm: 500 x 500 mm



SPORTEC® style rampa si profil de colt

Accesorii pentru mai multa siguranta si un aspect placut



SPORTEC® style
cu profil de rampa

culoare neagra

SPORTEC® style
cu profil de colt

culoare rosu caramiziu

Recomandari pentru:



» **MORE FROM YOUR FLOOR**

- Profil de rampa - bordura pentru preluarea diferentei de nivel intre 30 mm si 10 mm
- Profil metalic perimetral (L-profile) este necesar
- Este necesar lipirea perimetrala a bordurii si pe stratul suport.

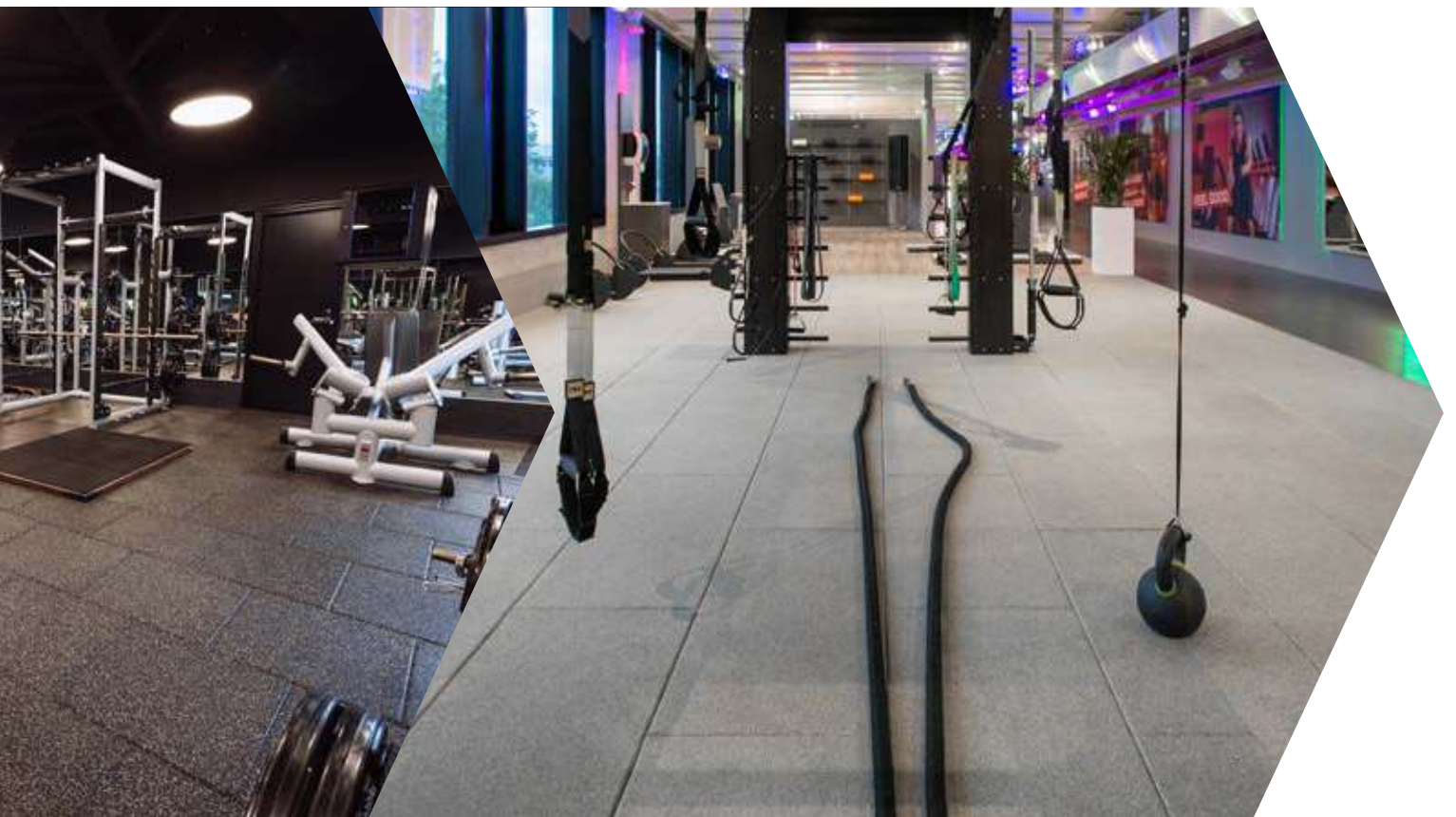


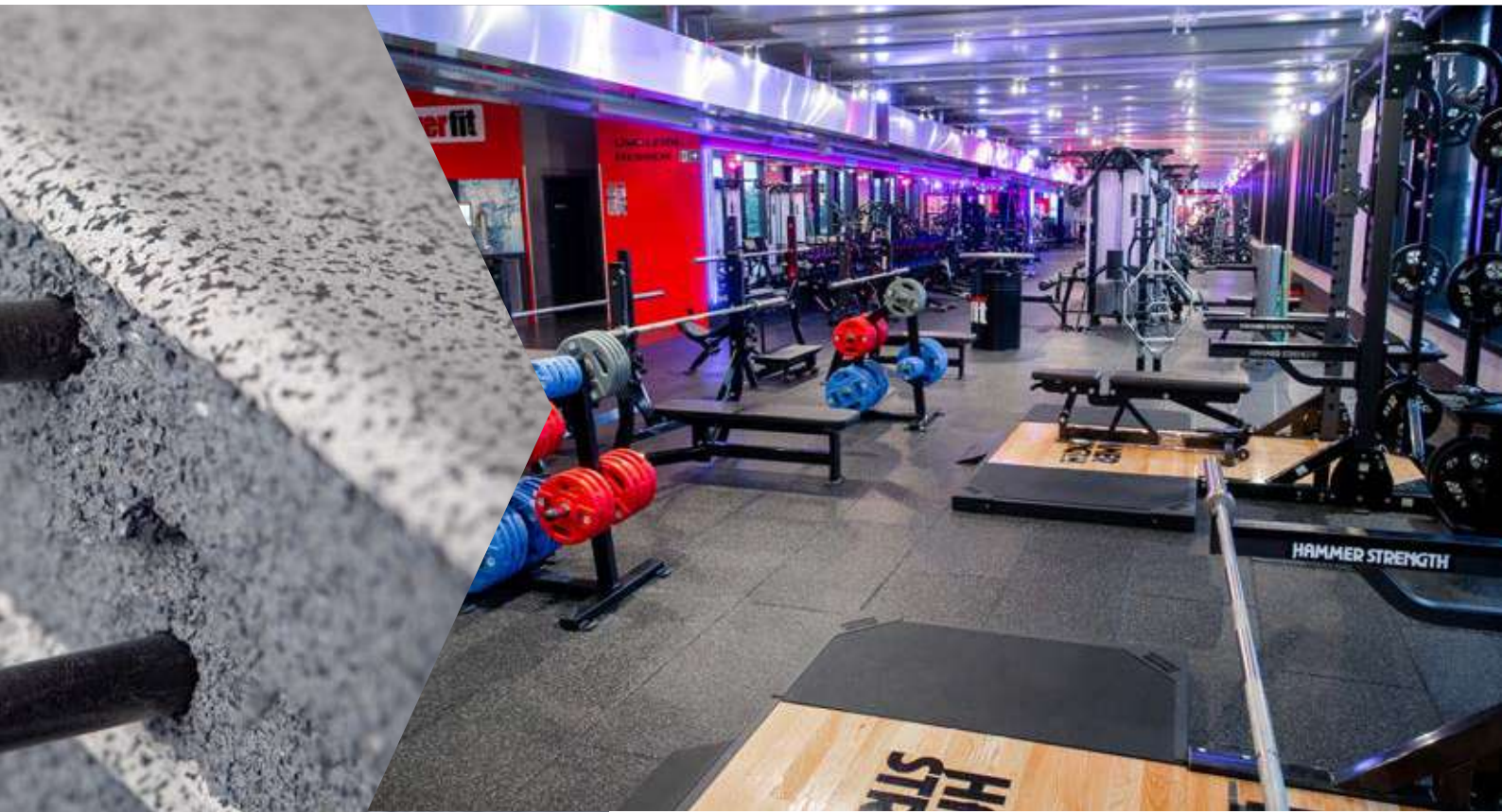
Material Granule cauciuc reciclat rosu | negru

Grosime: **Profil rampa:** 30/10 mm
Profil de colt: 30/10 mm
tolerances: ± 2 mm

Dimensiuni: 1,000 x 250 mm
tolerances: ± 0.8 %



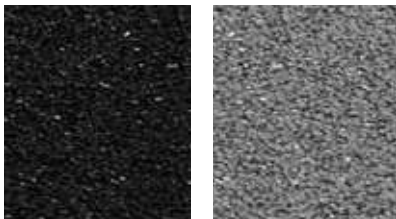






SPORTEC® base FR & base MS

Dale din cauciuc reciclat pentru zona greutati libere (haltere | gantere)



Recomandate pentru:



»MORE FROM YOUR FLOOR



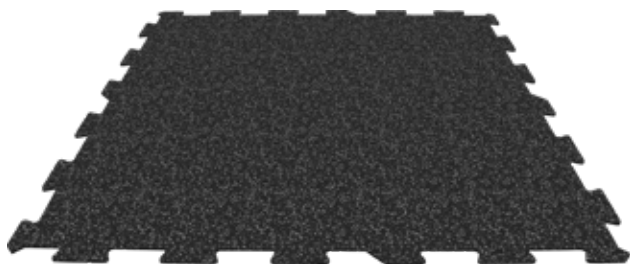
(base FR)

Material	base MS: 100% granule cauciuc reciclat base FR: 100% granule EPDM
Culori	negru (gri la cerere)
Grosime:	30 mm (± 2 mm)
Dimensiuni:	500 x 500 mm or 1000 x 500 mm (± 0.8 %)
Greutate /mp	base FR: 27.0 kg/m ² base MS: 25.6 kg/m ²



SPORTEC® Puzzle 2.0

Dale interlock-ing - solutie cu montaj rapid, nepermanenta (fara lipire)



Material **SPORTEC® Color 15:** granule fine din cauciuc reciclat si 15% granule EPDM, dimensiuni mici

Dimensiuni 1,030 mm / 1,030 mm (± 1.5 %)
Suprafata efectiva: 1,000 x 1,000 mm (± 1.5 %)

Grosimi 6, 8, 10 mm (± 0.3 mm)

Densitate ca. 1,050 kg/m³

Rezistenta la foc E_{fl} (DIN EN 13501-1)



Material **SPORTEC® purcolor:** 100 % granule EPDM

Dimensiuni 1,030 mm / 1,030 mm (± 1.5 %)
Covering dimensions: 1,000 x 1,000 mm (± 1.5 %)

Grosimi 6, 8, 10 mm (± 0.3 mm)

Densitate ca. 1,250 kg/m³

Rezistenta la foc C_{fl-s1} (DIN EN 13501-1)



Gama de culori din Sportec Color 15



Gama de culori din Sportec Purcolor

Recomandari pentru:





SPORTEC® | RZ VARNISH | RZ CLEANER | Adeziv special pt. cauciuc F58, F.Ball

Solutii de sigilare si curatare pentru suprafetele pardoselilor din cauciuc reciclat sau EPDM



Sigilant RZ TURBO PROTECT ZERO

Ambalaj 5 l + 500 ml hardener

Durata la aplicare (20°C) 120 Min.
(20 °C / 60 % relat. LF)

Aplicare cu trafaletul

Recomandate pentru:



Curatare RZ INTENSIVE CLEANER

Ambalaj

bidon 10 l



Adhesive Stycobond F58

Ambalaj Bidon 15 l | 5 l
Consum specific 250 - 300 gr/mp

Aplicare (20°C) approx. 30 minutes

Poate fi traficant la temp. (20°C) dupa approx. 8 hours

Umiditate maxima (20°C) < 75%

» MORE FROM YOUR FLOOR

Sigilant RZ TURBO PROTECT ZERO

- protectie pe termen lung pentru suprafetele din cauciuc
- Se realizeaza antiderapanta R10
- Rezistenta buna la agentii chimici.

Adeziv special F58 pentru cauciuc

- Adeziv monocomponent pentru role din cauciuc

Curatare RZ INTENSIVE CLEANER

- ideal pentru indepartarea petelor de pe suprafata pardoselilor din cauciuc

Pentru mai multe detalii apelati la un consultant Sonerg: 021.324.04.43



Instructiuni generale pentru montajul pardoselilor Sportec

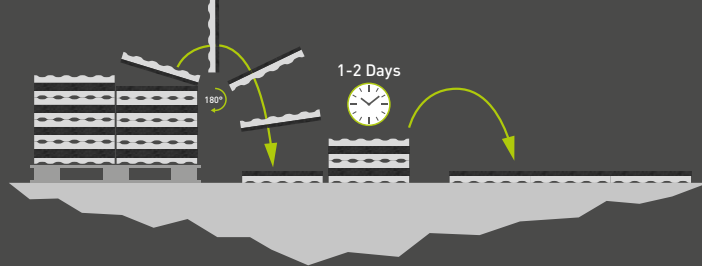
Unelte necesare

manusi, ruleta, cutter cu lame profesional, fir de trasaj cu creta, pendular special pentru dalele din cauciuc, rola presoare 50kg



IMPORTANT - Acclimatizarea materialului

Materialul trebuie sa fie desfacut din ambalaj si sa se acclimatizeze la temperatura ambientului unde va fi montat cel putin 24 ore inainte de a fi debitat si montat!



Adeziv F58 (350 g/m²), sigilant (100 ml/m²), solutie curatat (40 ml/m²) Sunt elemente necesare pentru un montaj corespunzator,

Instructiuni video pentru montaj puteti avea si accesand siteul nostru

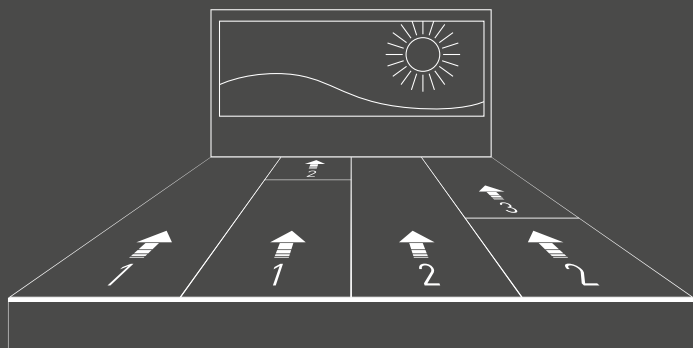
www.sonerg.ro



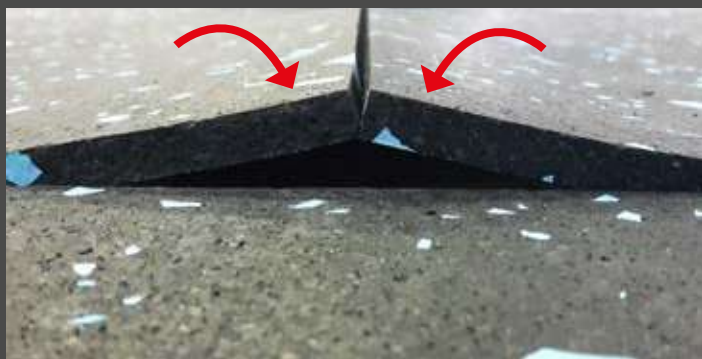


Montajul roleur

SPORTEC® roleur trebuie alinate intotdeauna inspre parte cea mai luminoasa a spatiului - catre spatiile vitrate.



SPORTEC® roleur trebuie montate cu exercitarea unei presiuni la imbinari (aproape de suprapunere). Nu sunt necesare alte tratamente ale imbinarilor intre roleur.

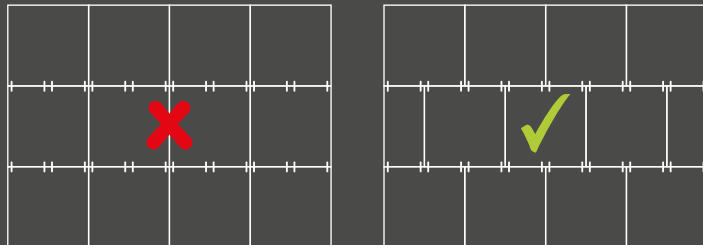


SPORTEC® Rolele se recomanda a fi complet lipite pe stratul suport. Rolele cu grosimi mai mari de 8 mm pot fi pozate (montate flotant) si asigurate cu benzi dublu adezive industriale.



Mantajul dalelor

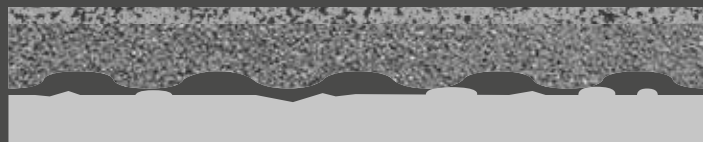
Dalele sunt concepute pentru a fi montate fara lipire (sunt prevazute cu stifturi de cuplare) iar mantajul se face in "T". Gaurile pentru stifturile de cuplare sunt in conformitate cu acest tip de mantaj (conf. imaginii din dreapta).



Dalele din cauciuc pot fi taiate cu un cutter profesional sau cu pendular



Datorita structurii speciale a suportului dalelor din cauciuc acestea pot fi montate si pe suprafate usor denivelate, acestea putand fi preluate de structura suportului. Este totusi recomandat sa apelati la o firma cu experienta in mantajul pardoselilor din cauciuc.



Pentru toate tipurile de pardoseli Sportec, Sonerg asigura serviciile de mantaj cu personal calificat angajati Sonerg. Experienta de peste 10 ani in mantajul pardoselilor Sportec.

» **MORE FROM YOUR FLOOR**



Pardoseli sportive din granule de cauciuc

Producator:

KRAIBURG Relastec GmbH & Co.KG
Fuchsberger Straße 4 · D-29410 Salzwedel



Distribuit in Romania prin:



Sonerg Montaj SRL
Bucuresti, strada Doicesti nr.14, Sector 3
Tel: 021.32.04.43
E-mail: office@sonerg.ro