

# TARALAY MILLENIUM

gerflor.com



**Gerflor**<sup>®</sup>  
the flooring group





# TARALAY MILLENIUM



## DESIGN WITHIN THE WHOLE THICKNESS - NO FILLER

- OUTSTANDING ABRASION RESISTANCE



## VERY HIGH DENSITY (VHD) FOAM BACKING

- EASY ROLLING FOR LOADS



## PROTECSOL® Mat SURFACE TREATMENT

- EASY CLEANING



## 100% RECYCLABLE

- ECO-RESPONSIBLE SOLUTIONS



# FINISHES SOLUTION



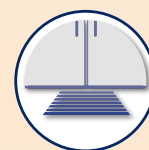
**CORNER PROTECTIONS** >

**WALL PROTECTION PANNELS** >

**HANDRAILS** >

> **COVING SOLUTIONS**

> **PROFILES**



**ENTRANCE MATS**

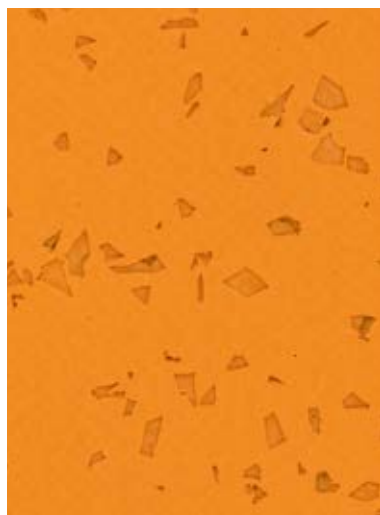


**ACCESSIBILITY**

.....  
To discover finishes solution, consult [Gerflor.com](http://Gerflor.com)

# TARALAY MILLENIUM

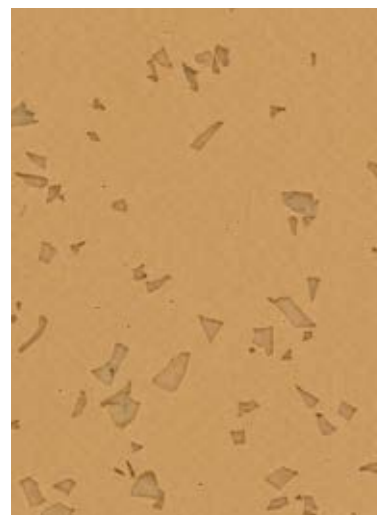
 2m	17 dB	 2m	8 dB	PROTECSOL® Mat
--	-------	--	------	----------------



STELLAR - 4163 Flore



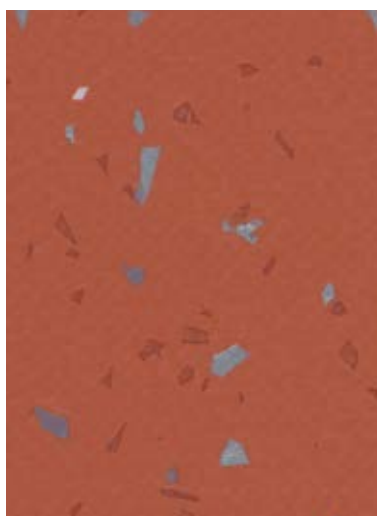
STELLAR - 4200 Apollon



STELLAR - 4039 Pan



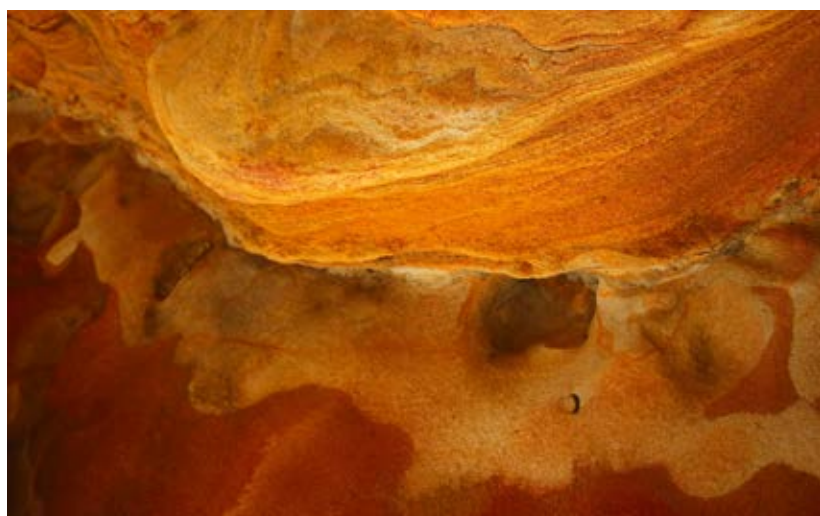
COSMIC - 4161 Hilda



COSMIC - 4160 Hermione



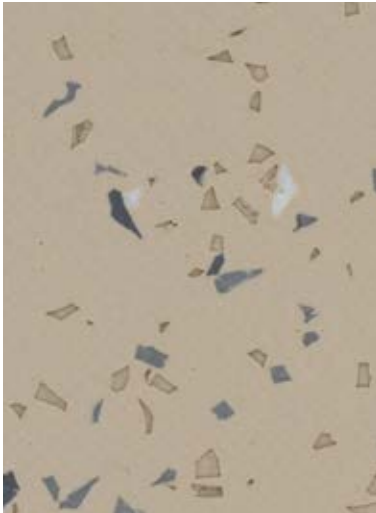
COSMIC - 4159 Kalliope



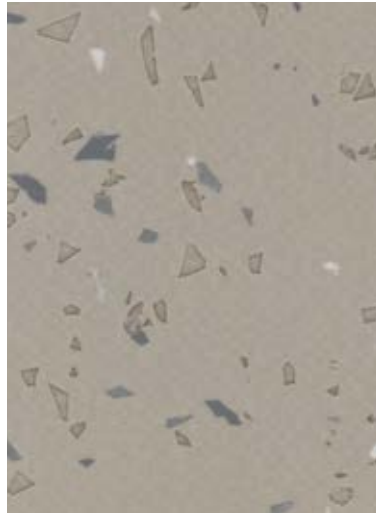
COSMIC - 4038 Delia



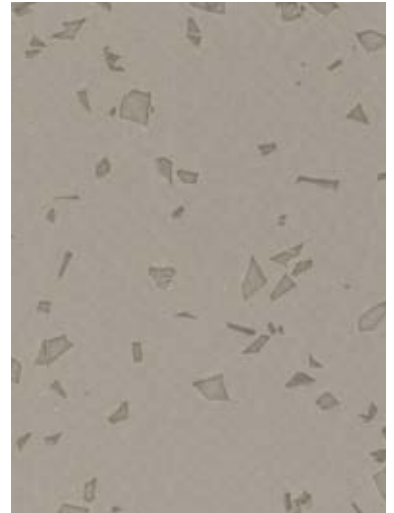
*Random application of decorative granules: natural design without pattern repeat*



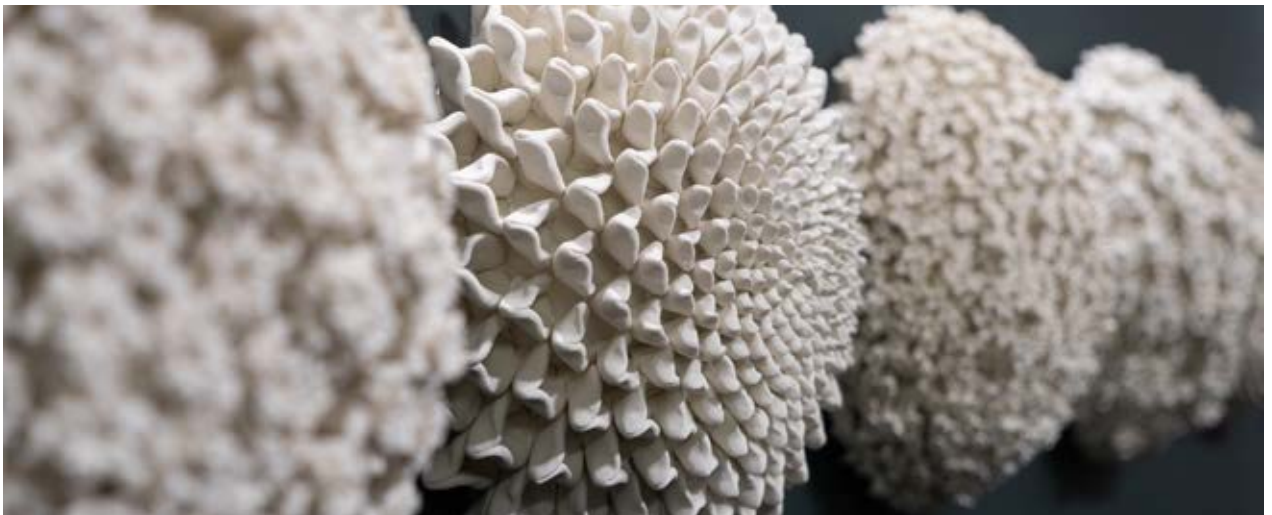
COSMIC - 4036 Vesta



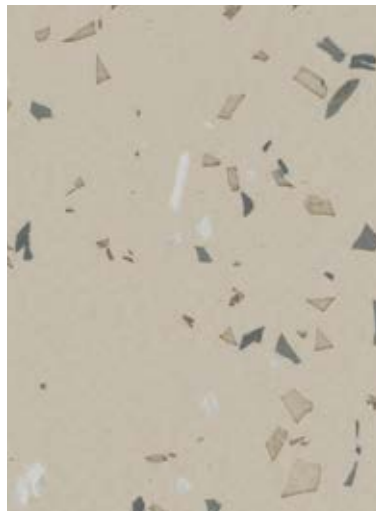
COSMIC - 4037 Gyptis



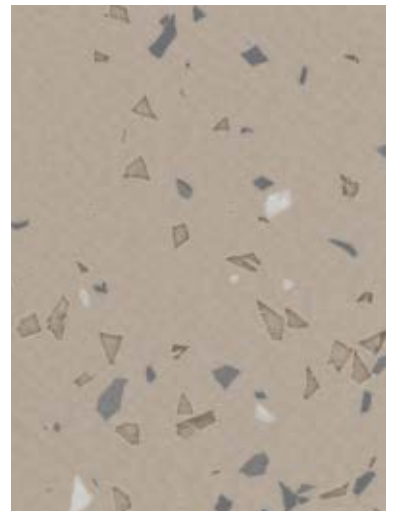
STELLAR - 4373 Fudo



COSMIC - 4374 Aria



COSMIC - 4370 Palma



COSMIC - 4369 Egeria



# TARALAY MILLENIUM

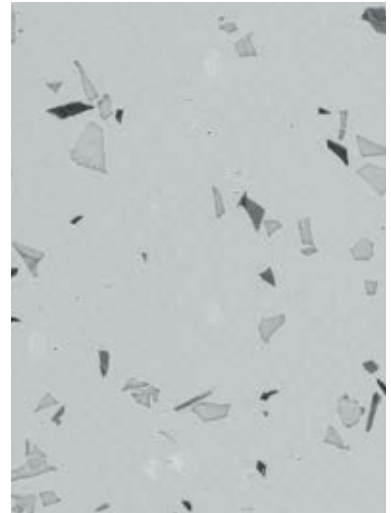
 2m	17 dB	 2m	8 dB	PROTECSOL® Mat
--	-------	--	------	----------------



STELLAR - 4371 Raki



COSMIC - 5720 Thia



COSMIC - 5721 Fortuna



COSMIC - 4368 Astree

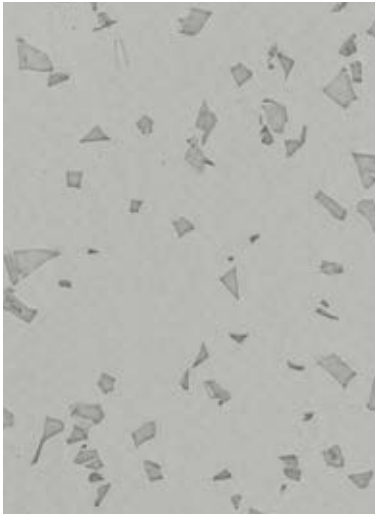


STELLAR - 4372 Boree



COSMIC - 5719 Eole





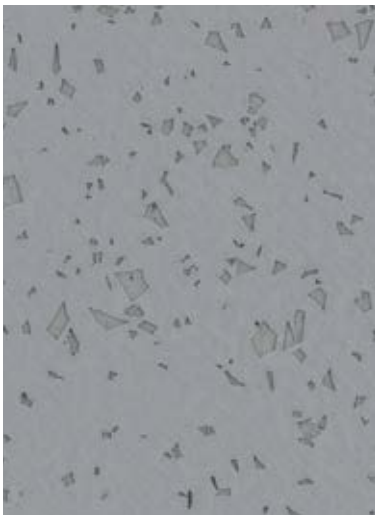
STELLAR - 5726 Yuna



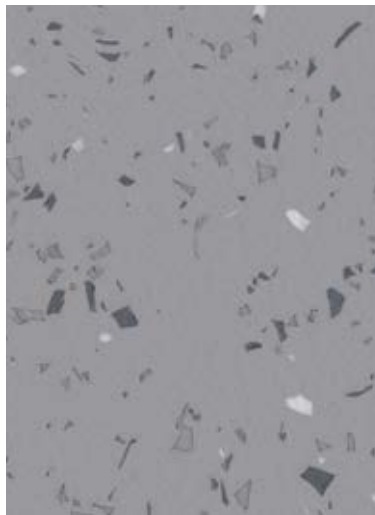
STELLAR - 5725 Freia



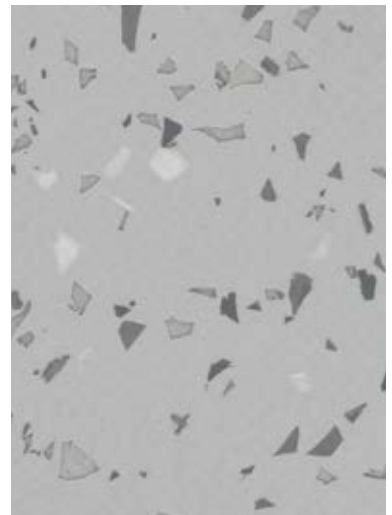
COSMIC - 8645 Bianca



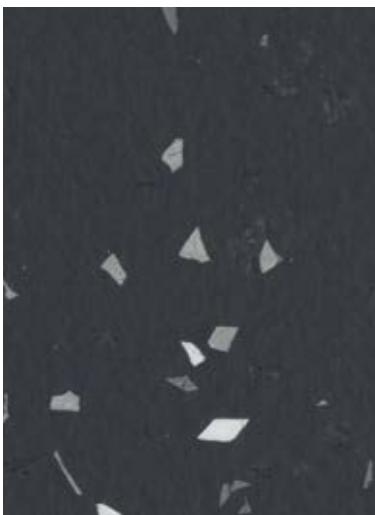
STELLAR - 5727 Hermes



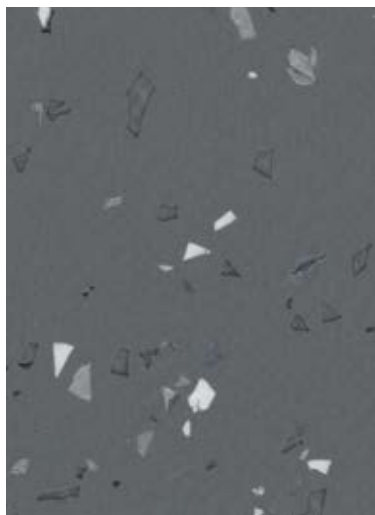
COSMIC - 5723 Lotis



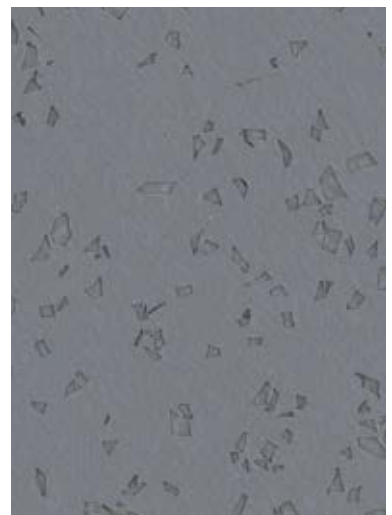
COSMIC - 5722 Cybele



COSMIC - 8856 Pandore



COSMIC - 5728 Ilias

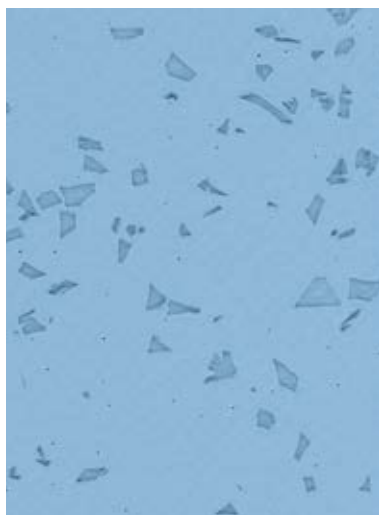


STELLAR - 5724 Chicago

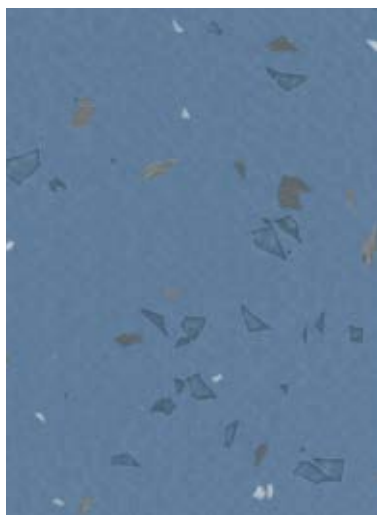


# TARALAY MILLENIUM

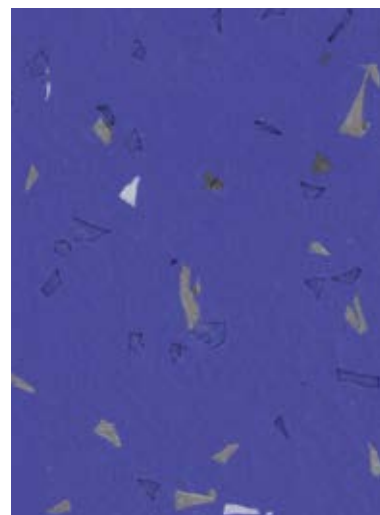
 2m	17 dB	 2m	8 dB	PROTECSOL® Mat
---	-------	---	------	----------------



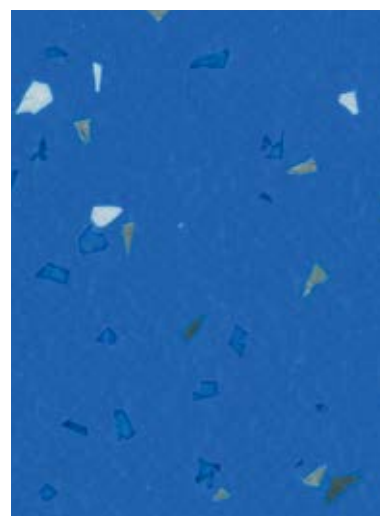
STELLAR - 3439 Europa



COSMIC - 3442 Doris



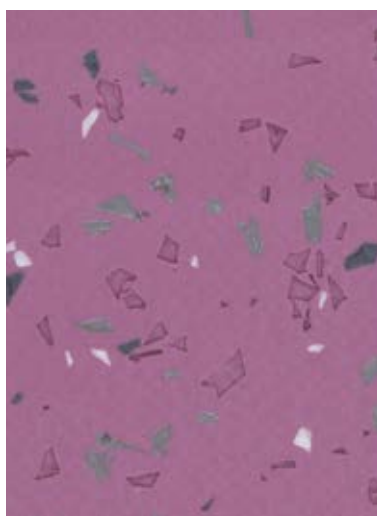
COSMIC - 3445 Elektra



COSMIC - 5718 Pallas



STELLAR - 4164 Eros



COSMIC - 3438 Iris



COSMIC - 4162 Adonis

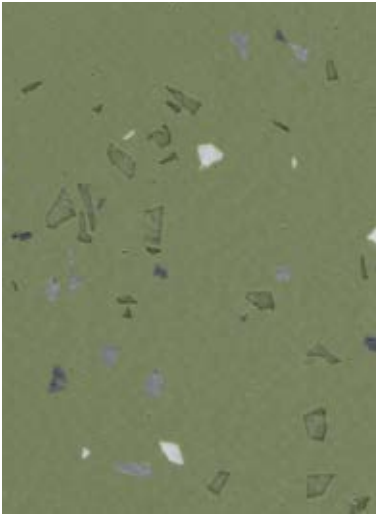




COSMIC - 3435 Nemesis



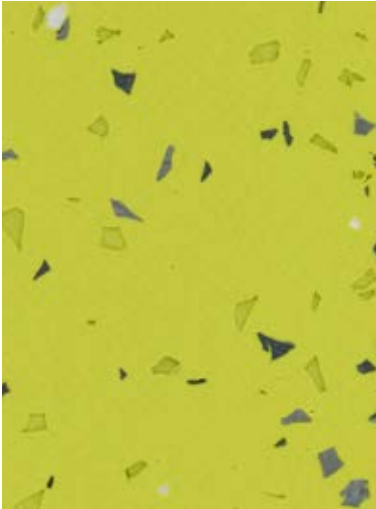
COSMIC - 4533 Ceres



COSMIC - 4532 Sylvia



STELLAR - 3446 Eden



COSMIC - 4531 Camilla



# TARALAY MILLENIUM



## TARALAY MILLENIUM COMPACT

**TARALAY MILLENIUM COMPACT** is a multilayered vinyl floor covering available in 2m wide sheet, with a group T wear rating. The product comprises a **1 mm thick coated wear layer, made of pure vinyl, coloured throughout its thickness (no transparent wear layer and no filler)**. Its complete thickness is 2 mm. It is reinforced with a fibre glass grid for a better dimensional stability. The construction of the product yields a 8dB sound insulation rating and a **resistance to indentation of 0.03 mm**. This flooring is protected by the surface treatment, **PROTECSOL® Mat**, with a minimum thickness of 13µm, ensuring easy maintenance and no required polish for the entire lifetime of the product.

It is composed of 50% mineral and inexhaustible materials. It does not contain any heavy metals or CMR 1&2 components and it is 100% compliant with REACH. The product emission rate of volatile organic compounds is <10 micrograms/m³ (TVOC after 28 days ISO 16000-6). It is 100% recyclable.



Rubber leaves indelible stains on vinyl floorings: do not use mats with rubber backing and replace tubular furniture feet with those made of PVC or polyamide. Place mats of sufficient length at entrances to reduce outside sources of dirt.

**IMPORTANT:** The information contained in this document is valid from 01/01/2021 and

## TARALAY MILLENIUM COMFORT

**TARALAY MILLENIUM COMFORT** is a multilayered vinyl floorcovering available in 2m wide sheet, with a group T wear rating. The product comprises a **1 mm thick coated wear layer, made of pure vinyl, coloured throughout its thickness (no transparent wear layer and no filler)**. Its complete thickness is 3.4 mm. It contains a Very High Density (VHD) foam backing and is reinforced with 2 fibre glass grids which yields a **17dB sound insulation** rating and a **resistance to indentation of 0.07 mm**. This flooring is protected by the surface treatment, **PROTECSOL® Mat**, with a minimum thickness of 13µm, ensuring easy maintenance and no required polish for the entire lifetime of the product.

It is composed of 50% mineral and inexhaustible materials. It does not contain any heavy metals or CMR 1&2 components and it is 100% compliant with REACH. The product emission rate of volatile organic compounds is <10 micrograms/m³ (TVOC after 28 days ISO 16000-6). It is 100% recyclable.

is subject to change at any time without notice. In the context of constantly changing technology, our customers are responsible, prior to any use, for checking with us that this document is the version in force.

	TARALAY MILLENIUM COMPACT		TARALAY MILLENIUM COMFORT	
<b>DESCRIPTION</b>				
Total thickness	EN ISO 24346	mm	2.00	3.40
	ASTM F386-02	inch	0.08	0.12
Wearlayer thickness	EN ISO 24340	mm	1.00	1.00
	ASTM F410-02	inch	0.039	0.039
Weight	EN ISO 23997	g/sq.m	2725	3385
		lbs/sq.ft	0.56	0.69
Width of sheet	EN ISO 24341	cm	200	200
		feet - inch	6'6"	6'6"
Length of sheet	EN ISO 24341	m	20	25
		feet - inch	66'	82'
<b>CLASSIFICATION</b>				
Norm / Product specification	-	-	EN ISO 10582	EN 651
European classification	EN ISO 10874	class	34-43	34-42
Fire rating	EN 13501-1	class	Bfl-s1	Cfl-s1
Static electrical propensity	EN 1815	kV	< 2	< 2
Slip resistance <sup>(1)</sup>	DIN 51 130	class	R10	R10
<b>PERFORMANCES</b>				
Wear resistance	EN 660.2	mm³	≤ 2.0	≤ 2.0
Wear group	-	group	T	T
Type binder content	EN ISO 10582	type	I	-
Dimensional stability	EN ISO 23999	%	≤ 0.40	≤ 0.40
Impact sound insulation	EN ISO 717-2	dB	8	17
Sonorité à la marche	NFS 31 074	dB	-	< 65
Residual indentation (requirement)	EN ISO 24343-1	mm	≤ 0.10	≤ 0.20
Residual indentation (average measured value)	-	mm	~ 0.03	≈ 0.07
Castor chair test (type W)	ISO 4918	-	OK	OK
Conductivité thermique	EN ISO 10456	W/(m.k)	0.25	0.25
Colour fastness	EN 20 105 - B02	degree	≥ 6	≥ 6
Surface treatment	-	-	PROTECSOL® Mat	PROTECSOL® Mat
Chemical products resistance <sup>(2)</sup>	EN ISO 26987	-	OK	OK
Anti-bacterial activity (E. coli - S. aureus - MRSA) <sup>(3)</sup>	ISO 22196	-	> 99% inhibits growth	> 99% inhibits growth
Antiviral activity (human coronavirus) after 2h <sup>(3)</sup>	ISO 21702	-	> 99,3 % (virucidal activity)	> 99% inhibits growth
<b>ENVIRONMENT / INDOOR AIR QUALITY</b>				
TVOC after 28 days	ISO 16000-6	micrograms/m³	<10	<10
Certification	-	-	Floorscore®	Floorscore®
<b>CE MARKING</b>				
CE	EN 14041			

**Gerflor International**  
Tel: +33 (0)4 74 05 40 00  
Fax: +33 (0)4 74 05 03 13  
e-mail: gerflorcontract@gerflor.com

(1) For lifetime sustainable wet resistance, please refer to Tarasafe ranges.  
(2) Regarding the resistance to chemicals, please download the corresponding leaflet from our website.  
(3) The implementation of an effective cleaning regime is the most important defence against infection.

## TARALAY MILLENIUM: AN ECO-RESPONSIBLE CHOICE

<p><b>COMPOSITION</b> 100% REACH FREE of formaldehyde FREE of heavy metals FREE of solvent</p>	<p><b>RECYCLABLE</b> 100%</p>	<p><b>INDOOR AIR QUALITY</b> 100 times better than norms requirements (TVOC &lt;10 micrograms/m³ after 28 days)</p>	<p><b>LCA</b> Eco-designed according to a product specific Life Cycle Analysis</p>	<p><b>WELLNESS</b> Anti slip performance R10 Comfort: Walking comfort &lt;55dB Impact noise reduction -17dB</p>
--	-----------------------------------	---	--	---

